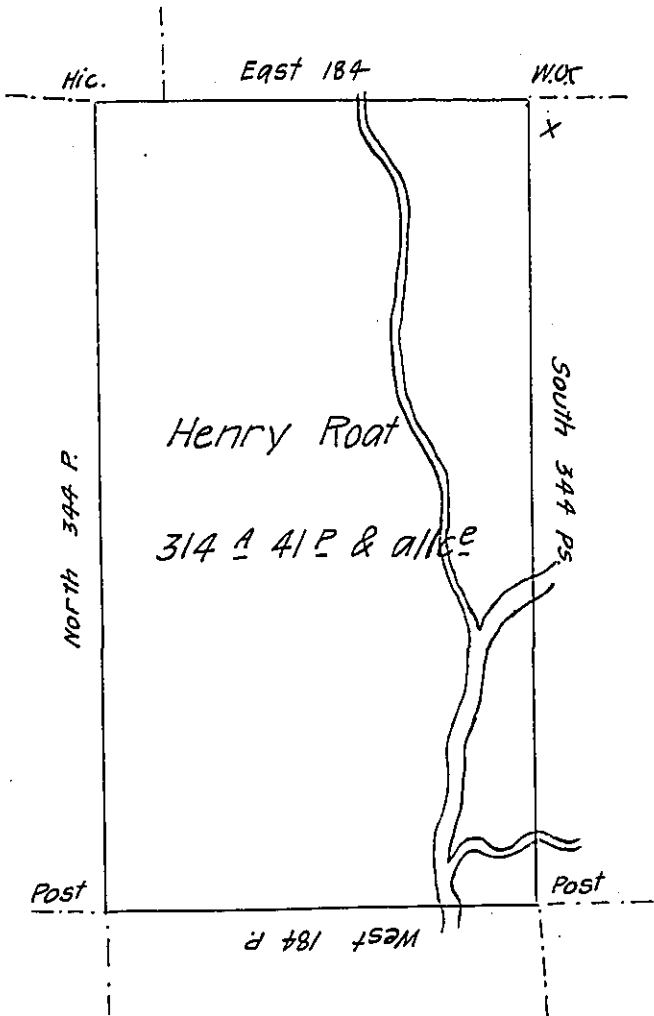


Peter Roat

Simon Roat

John Roat

Paul Smock



Chas Roat

Situate on the east side of French Creek in Allegheny County  
 Containing 314 A 41 per. & allowance of Six P. Cent for roads &c  
 Surveyed the 29<sup>th</sup> day of May 1795 in pursuance of a warrant dated  
 the 10<sup>th</sup> day of April 1793.

W<sup>m</sup> Power D<sup>y</sup> 5<sup>c</sup>

To Dan<sup>l</sup> Brodhead Esq<sup>r</sup>  
 Surveyor General.

IN TESTIMONY that the above is a copy of the original remaining on file in  
 the Department of Internal Affairs of Pennsylvania, made  
 conformably to an Act of Assembly approved the 16th day of  
 February, 1833, I have hereunto set my Hand and caused  
 the Seal of said Department to be affixed at Harrisburg,  
 this seventh day of March 1907.

*Isaac B. Brown*  
 Secretary of Internal Affairs.